

Work to begin on new \$21.5m commercial hub with promise of more jobs for Ipswich

Brenton Waters September 5, 2019

IPSWICH FIRST | 



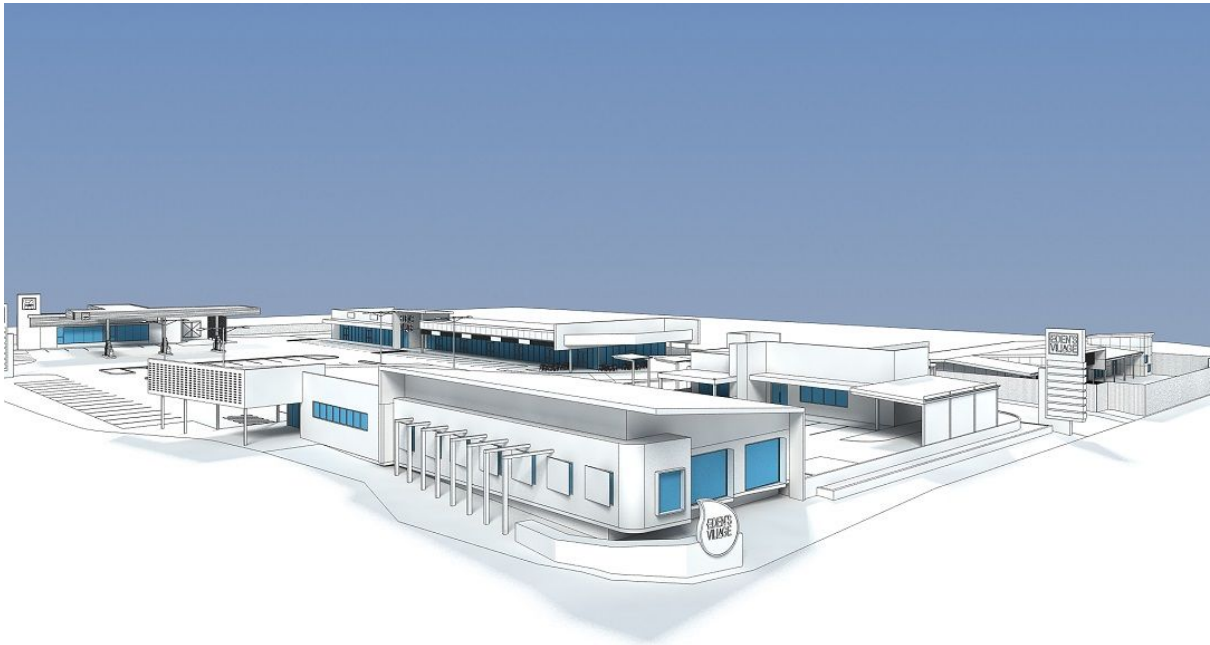
Edens Crossing development, Redbank Plains. CEO DeLuca Constructions Nic DeLuca with Senior Development Manager Peet Limited Jonathon Lawson. Picture: Renae Droop/RDW Photography

Work is about to start on a new \$21.5 million mixed-use centre in a major boost for the growing community of Redbank Plains.

It will be called Eden's Village and include a childcare centre, service station, fast food outlet, medical centre and retail space.

The centre will be on the extension of Mt Juillerat Drive on a 1.25 hectare site in the Eden's Crossing development.

Up to 18,000 cars a day are expected to use the new access onto Centenary Highway when it opens early next year.



Queensland developer De Luca Corporation plans to build the centre in two stages, with an early learning centre opening in January 2020, followed by a 7-Eleven fuel and retail centre in March.

The childcare centre will be the fourth owned and operated by De Luca under its Kidz Magic Early Learning Centre brand, with enrolments for 82 students set to open this month.

Stage two will include a medical centre and drive-thru takeaway opening in June 2020. Construction is expected to create about 200 jobs.

Managing director Nic De Luca said the Eden's Village complex had been carefully tailored to suit the demographics of the fast-growing community.

"The new road makes it very attractive from a retail perspective, highlighted by the early commitment from 7-Eleven," he said.

"When we saw the opportunity for childcare too, that was a real plus.

“Children under five represent more than 13 per cent of that catchment – almost twice as many as the Queensland average – and we see potential demand for another childcare centre in the area very quickly.

“We opened our first owned and operated Kidz Magic centre 10 years ago and it has been a great success.

“We have taken our time and this will be our fourth centre. We expect to grow that to 10 centres in the next three to five years.”



Eden’s Crossing is a 1200-lot masterplanned community in Redbank Plains being developed by national developer Peet Limited.

It is currently home to more than 300 families.