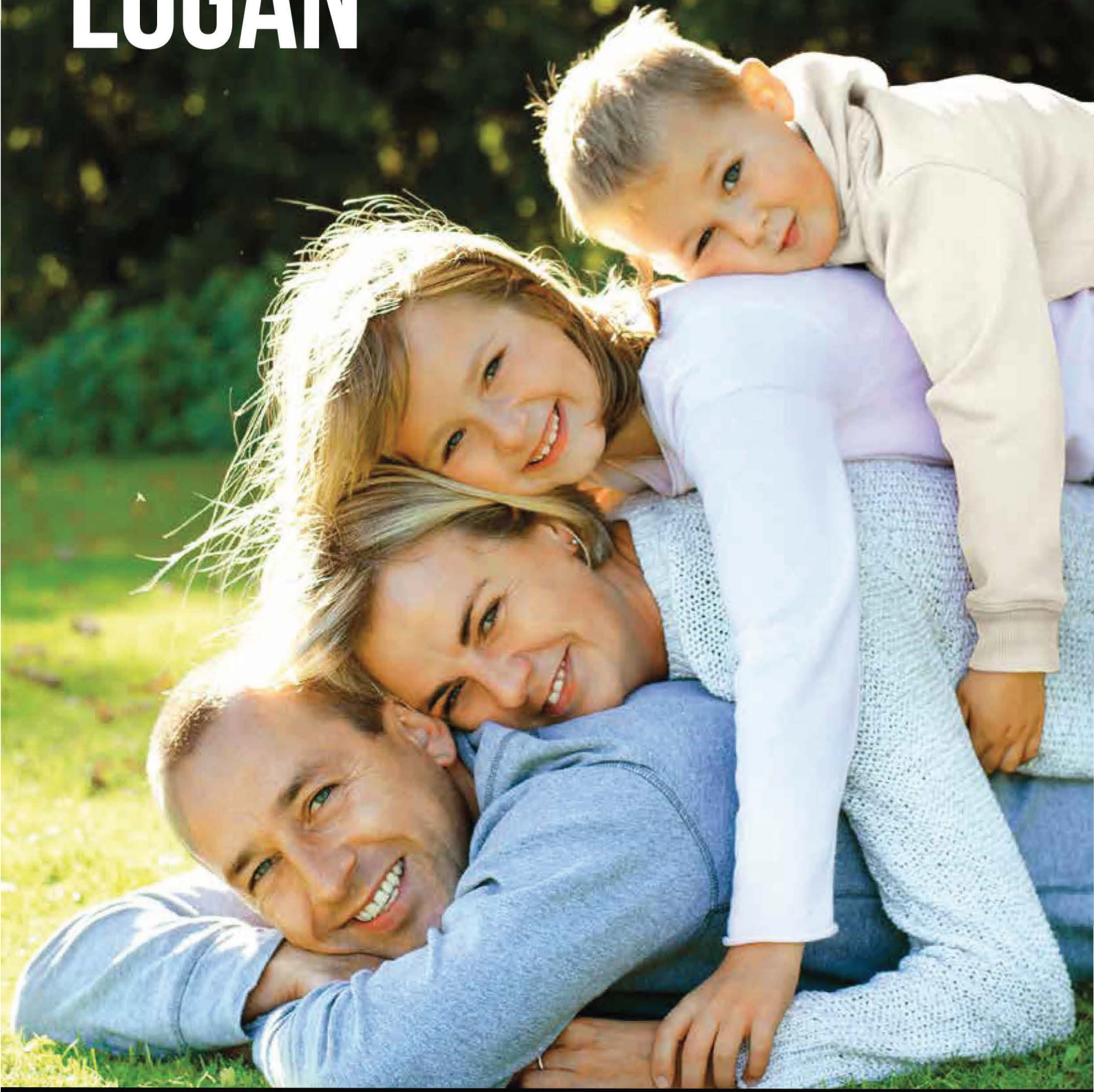
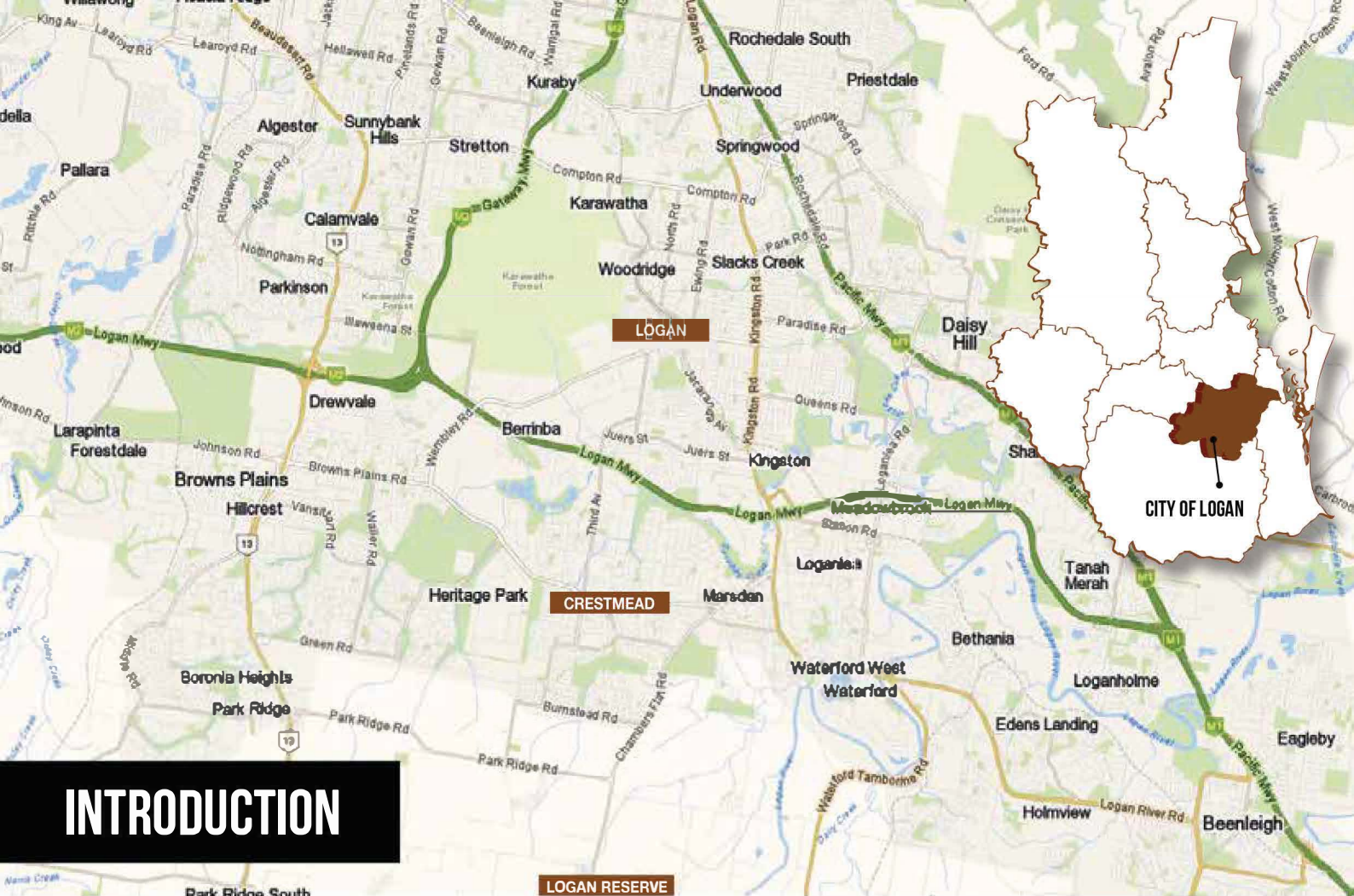


CITY OF LOGAN



CONTENTS

- Introduction3
- Location.....4
- Logan5
- Crestmead.....8
- Logan Reserve9
- Demographics 10
- Local Infrastructure 12
- Major Projects 13
- Investment Virtues..... 16



INTRODUCTION

City of Logan

Logan is home to more than 300,000 people from more than 215 different cultures. Logan is also a very young city with around 50 per cent of residents aged 30 or younger. Logan has become known as one of the most diverse cities in Australia.

As a young city, Logan's residential neighbourhoods are predominantly fresh and contemporary. New estates continue to flourish, giving locals a wide range of lifestyle options, from leafy suburbs to bushland acreage. Many older suburbs predating the city's short history have been revitalised through urban and community renewal partnership projects between Logan City Council and the Queensland Government.

Given its central geographic location and available young workforce, Logan has thriving commercial, retail and manufacturing precincts, as well as healthy service and wholesale industries.

Logan is ideally located between Brisbane, Ipswich and the Gold Coast, and has easy access to the national highway and rail networks. It has thriving light industrial precincts at Marsden, Crestmead, Slacks Creek and Loganholme, which are continuing to expand to meet the demand of quality.

Logan's cafe, restaurant, hotel and club scene has flourished in recent years. In Logan you can experience a diversity of tastes in a range of quality venues.

Logan also has a great range of sporting and service clubs, of which tens of thousands of our residents are members, as well as hotels offering stylish decor, fine food and live entertainment.

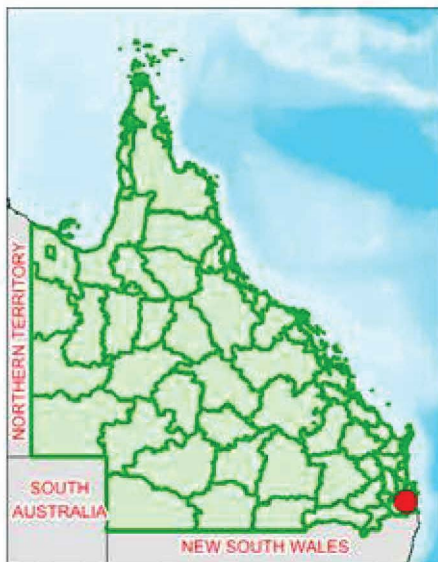
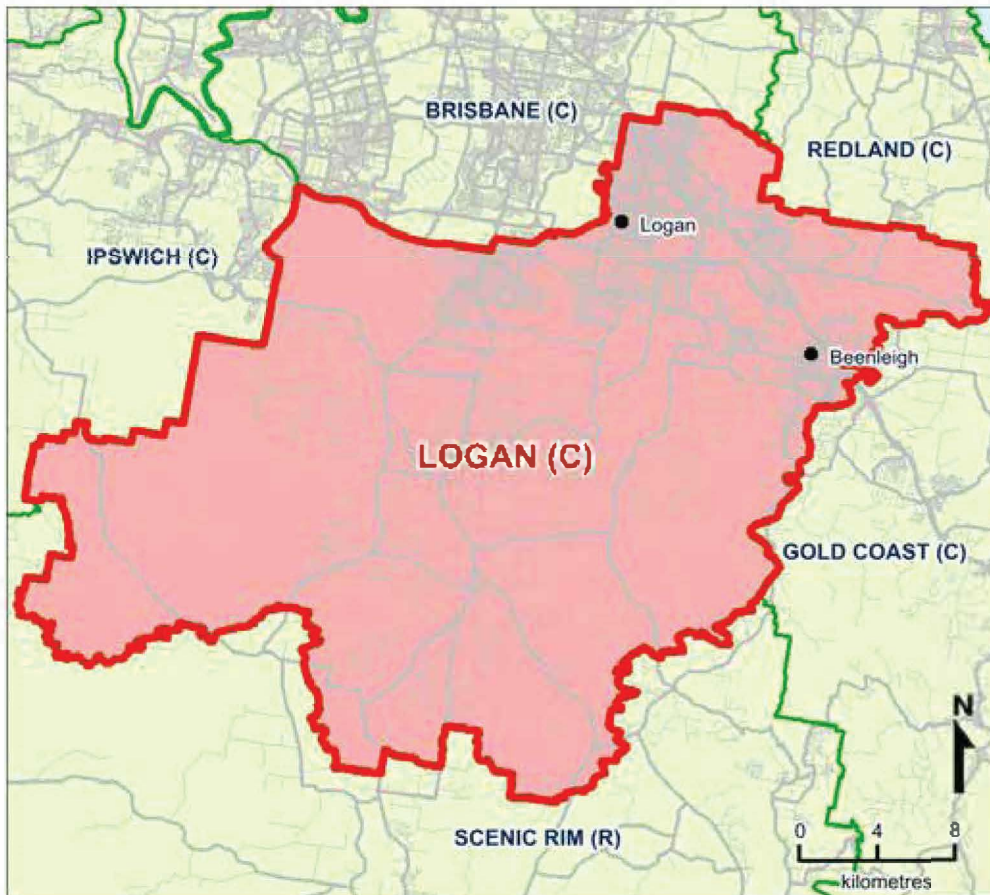
Logan has more than 1,100 environmental and recreational parks, many featuring dog off-leash areas, exercise facilities, play equipment and skate ramps. There are pristine bushland reserves and wetlands, as well as manicured waterfront parks along the Logan River. The natural environment is an important facet to life in Logan, and a popular place to enjoy the bush and its wildlife is the Daisy Hill State Forest and Daisy Hill Koala Centre.

Logan recreational facilities include meticulously manicured golf courses, spectacular aquatic facilities and the multi-purpose InSports Centre, which features basketball courts as well as a gymnasium, rock-climbing, cafe and function room.

The opening of the Logan Entertainment Centre in 2002 ushered in a new era for events and entertainment in the city. Finally the city had its own venue for conferences, seminars and major functions. The centre's arrival also meant locals would have the opportunity to see major touring acts without having to leave the city.

Source: www.logan.qld.gov.au

LOCATION



Source: www.qgso.qld.gov.au



The City of Logan is a local government area in South East Queensland, Australia. The city is situated between the City of Brisbane to the north and Gold Coast to the south. The city also borders the Scenic Rim, the City of Ipswich and Redland City. The city is divided into 63 suburbs and 12 divisions which elect a Councillor.

In the north east of the area the Logan Motorway joins the Pacific Motorway. The Mount Lindesay Highway and Sydney-Brisbane rail corridor crosses the suburb roughly along a central north-south axis. City of Logan is located across parts of the sub-basin of Oxley Creek, Logan River and Albert River. Two new urban developments are being built at Yarrabilba and Greater Flagstone joining existing hubs at the Beenleigh, Logan Hyperdome, Browns Plains and Logan Central. Griffith University established the Logan campus.

History

Cotton was the first commercial crop grown in the region. While this crop was marginally successful, between 1866 and 1847, sugar was soon to become the staple industry.

Numerous sugar mills were built along the river, the earliest of which was Fryar and Strachan's on the Logan River at Loganholme, built in July 1869. The catastrophic flood of 1887 was the end for many Logan River sugar farmers, crops were destroyed and covered with metres of silt. Even through the flood a small but viable sugar industry remains today on the south side of the river, centred on the Rocky Point Mill.

The post-war need for housing sparked the next wave of development of the region. Brisbane City introduced a new town plan in 1965, which required the provision of town water, sewerage, kerb and channelling to all

new subdivisions. This led developers to purchase land in the northern sectors of Albert and Beaudesert Shires, where regulations were more relaxed. Urban development boomed in the Rochedale and Springwood areas from the late 1960s and in Browns Plains from the early 1970s.

The Wild Water Water Slide Park began operations in October 1982. The site was to become the Logan Hyperdome with the first work on the regional shopping centre beginning in October 1988. It was officially opened in July 1989. Construction work on the Logan Hospital started in February 1989. In August 2011, the Logan suburb of Slacks Creek was the location for Queensland's worst house fire.

The Department of Local Government instigated the formation of the new Logan Shire, which included the northern suburbs of both Albert and Beaudesert Shires. A section in the north previously belonged to the Shire of Tingalpa. There were about 69,000 people living to the north of the Logan River. On 31 May 1978 Local Government Minister Russ Hinze introduced the Local Government (Adjustment of Boundaries) Bill and which was officially approved on 8 June 1978. Logan then was declared a city on 1 January 1981 and the administration building on Wembley Road was opened in February 1981.

The City was named after Captain Patrick Logan, one of the founders of the Moreton Bay convict settlement. Logan was honoured in the names of many locales in the district, such as the Logan River, the suburbs of Loganlea, Logan Village, Loganholme, Logan Reserve and Logan Central, the Logan Motorway and Logan Road, which connects the city with the nearby state capital of Brisbane.

Economy

Looking ahead to the next 20 years, Logan City will continue to be one of the fastest growing cities in Queensland. The population is expected to increase by up to 200,000 within the next 20 years and Logan's objective is to create at least 53,000 jobs to support this population growth.

Logan City is a major economic destination within South East Queensland. Key industries in the City's economy include manufacturing and retail sectors, business and community services, the property sector, construction and agricultural industries. This already diverse economy has the potential to grow and diversify further while adding a stronger focus on technology and knowledge based industries. Given its central geographic location and available young workforce, Logan is ideally placed for continued growth in the South-East Queensland region.



LOGAN CITY IS A MAJOR ECONOMIC DESTINATION WITHIN SOUTH EAST QUEENSLAND

Employment by Industry

Logan City LGA and Queensland, 2011

Industry	Logan City LGA		Queensland		Specialisation ratio
	number	%	number	%	number
Agriculture, forestry and fishing	783	0.6	55,416	2.7	0.23
Mining	929	0.7	52,955	2.6	0.28
Manufacturing	17,305	13.6	171,669	8.4	1.61
Electricity, gas, water and waste services	1,319	1.0	24,828	1.2	0.85
Construction	14,377	11.3	183,780	9.0	1.25
Wholesale trade	6,808	5.3	74,288	3.6	1.47
Retail trade	14,611	11.5	217,610	10.7	1.08
Accommodation and food services	6,542	5.1	141,856	7.0	0.74
Transport, postal and warehousing	9,180	7.2	107,072	5.3	1.37
Information media and telecommunications	1,298	1.0	25,358	1.2	0.82
Financial and insurance services	3,035	2.4	54,153	2.7	0.90
Rental, hiring and real estate services	1,878	1.5	37,007	1.8	0.81
Professional, scientific and technical services	5,816	4.6	132,754	6.5	0.70
Administrative and support services	4,383	3.4	65,015	3.2	1.08
Public administration and safety	6,764	5.3	136,818	6.7	0.79
Education and training	8,175	6.4	160,921	7.9	0.81
Health care and social assistance	13,475	10.6	242,559	11.9	0.89
Arts and recreation services	1,391	1.1	28,444	1.4	0.78
Other services	5,550	4.4	78,713	3.9	1.13
Total^(a)	127,307	100.0	2,039,276	100.0	1.00

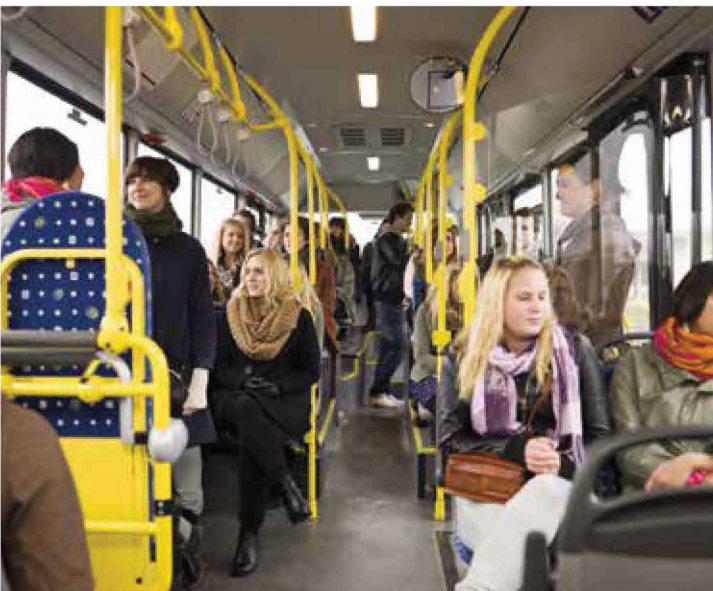
Transport

City of Logan is serviced by Queensland Rail's Beenleigh and Gold Coast railway lines. The stations are Trinder Park, Woodridge, Kingston, Loganlea, Bethania, Edens Landing, Holmview and Beenleigh although Gold Coast trains stop only at Beenleigh and Loganlea stations. Integrated ticketing was introduced in South East Queensland in 2004 through TransLink which has improved access to public transport. TransLink bus routes now service most of the built-up areas of the city.

Logan City Bus Service is a bus operator, servicing places between Brisbane and Gold Coast at Logan City. First operated as Greenline Bus Service, it was purchased by Clark's Bus Service in 1987. Further development included the purchasing of Rochedale Bus Service in 1995. The trading name of Logan City Bus Service was adopted in 2003. Logan City Bus Service operates a number of services under the TransLink banner, in which most services are based around Loganholme and Springwood Bus Stations along Pacific Motorway. They also operate peak hour buses between the City of Logan and Brisbane City.

There are also disability transport services available, as well as limousines, coach charters and taxi services.

TRANSLINK BUS ROUTES NOW SERVICE MOST OF THE BUILT-UP AREAS OF THE CITY



Culture and Sport

Logan has 924 parks and reserves all with combinations of facilities. Also Logan offers plenty of active choices such as local swimming pools, sporting clubs, cycling tracks, walking tracks, little athletics, tinnie trails (self guided heritage trail), golf, basketball/volleyball parks, skate parks, bmx tracks, walking groups and go karting.



City of Logan has recently been under development for new bistro areas across the region. Cinemas, shopping complexes and parks are prevalent. The city also has a free public art gallery. The internationally successful Australian band Savage Garden, who sold 25 million albums, are from Logan and so is Olympic swimmer Jodie Henry, three time gold medalist in the pool at the 2004 Olympics and world record holder.

Logan City is home to Souths Logan Magpies rugby league team, one of the oldest existing rugby league clubs in Australia. It is also home to the Logan Thunder WNBL team.

Every Saturday at a free 5 km timed run takes place at three different locations in Logan City. The events are known as Logan River parkrun, Yarrabilba parkrun, and Berrinba parkrun.

Source: Wikipedia, www.logan.qld.gov.au



Crestmead is a suburb of the City of Logan, Queensland, Australia. At the 2011 Australian Census the suburb recorded a population of 11,210.

Demographics

Out of Crestmead's population 50.5% are female and 49.5% male. The median/average age of the Crestmead population is 27 years of age, 10 years below the Australian average. 69.3% of people living in Crestmead were born in Australia.

The other top responses for country of birth were New Zealand 10.6%, England 2.7%, Samoa 2.2%, Philippines 1.2%, Cambodia 0.7%. 80.7% of people speak English as their first language 4.4% Samoan, 1.1% Khmer, 0.7% Spanish, 0.6% Tagalog, 0.5% Hindi.

Education

There are two schools in Crestmead.

Crestmead State School, a government primary (P-7) school, is located at 27-61 Augusta Street and St Francis College, a Roman Catholic primary and secondary (P-12) school, is located at 64 Julie Street.

Economy

The Crestmead Industrial Estate is located on the western side of the suburb. It has lot sizes ranging from 1,800 square metres to 2.6 hectares. It is suitable for light to medium industry and businesses can operate 24 hours a day.

Amenities

Crestmead Community Centre is in Crestmead Community Park and can be accessed from Gimlet Street. It comprises a hall, small meeting rooms and kitchen facilities. A range of activities including dancing and health clinics operate from the centre.

Numbellie Karulboo Community Centre is provided on the grounds of St Francis College by the college for use by the community. 'Numbellie Karulboo' means 'everybody together' in the Yuggera and Yugambah languages. It hosts an indigenous dance group, children's playgroups and cross-cultural programs.

Crestmead Medical Surgery is located in Crestmead offering residents medical attention.

The neighbouring suburb of Marsden offers Crestmead residents a shopping centre featuring fresh food, services, fashion stores and is anchored by Coles.

Crestmead and surrounding areas supply many recreational facilities for residents to enjoy including Crestmead Park and Logan Metro Sports Centre.

LOGAN RESERVE



Logan Reserve is a rural, residential suburb of Logan City, Queensland, Australia. At the 2011 Australian Census the suburb recorded a population of 2,154. Logan Reserve offers acreage bushland homes and a few suburban-style streets to its north. Most properties here range from two to ten acres, with dwelling types varying between cottage style, Tudor, large western red cedar and large country estates. Despite the country lifestyle afforded by Logan Reserve, there are a number of amenities including a primary school.

Demographics

In the 2011 Census the population of Logan Reserve is 2,154, 49.9% female and 50.1% male. The median/average age of the Logan Reserve population is 30 years of age, 7 years below the Australian average. 71.6% of people living in Logan Reserve were born in Australia. The other top responses for country of birth were New Zealand 6.6%, England 4.6%, Cambodia 1.8%, Samoa 1.3%, Fiji 1.1%. 81.3% of people speak English as their first language 3% Khmer, 2.5% Samoan, 1.9% Hmong, 1.3% Vietnamese, 0.6% Hindi.

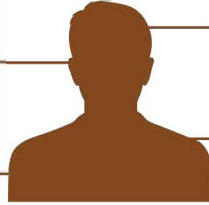
History

The birth of Logan Reserve came in 1862, when 500,000 acres of the Logan Agricultural Reserve were released for use by settlers. Cotton was the first crop grown, and in 1864 to 1865 a small bark church/school became the first public building to be erected. Early settlers hailed from Yorkshire and timber-getting and farming were the primary industries during the 1890s and remained important through to the early 20th century, when tobacco growing was taken on.

DEMOGRAPHICS

Population (2014)

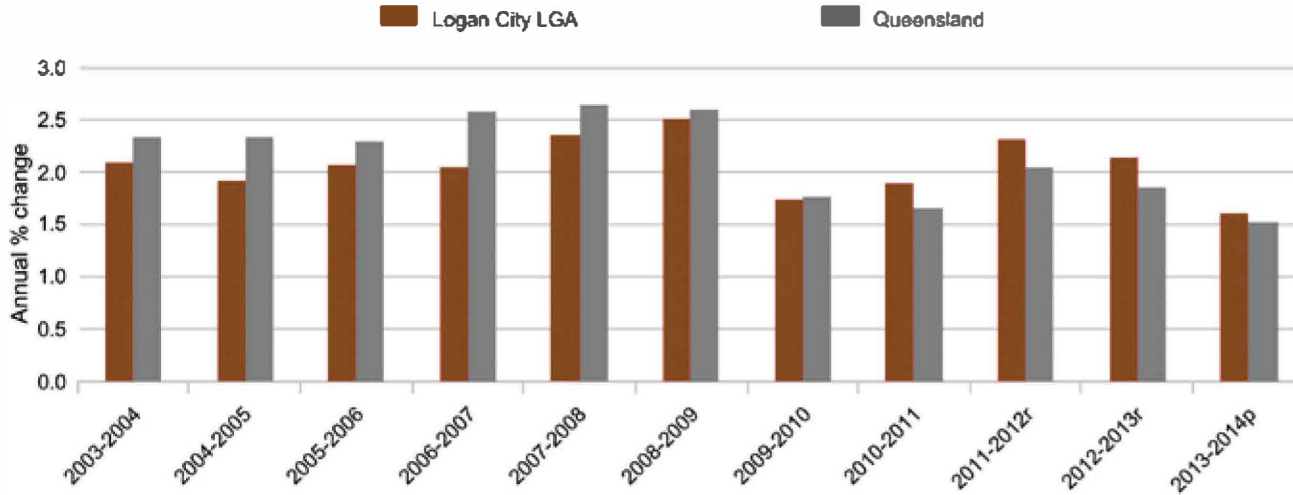
305,110



Median Age (2014)

33.6 years

Estimated resident population growth (Logan City LGA and QLD)



Early childhood education and care services



208 services

(Logan City LGA as at 31 August 2015)



Schools

73 schools

(Logan City LGA as at 30 June 2015)

The population is projected to increase from

287,474 persons to 521,749 persons

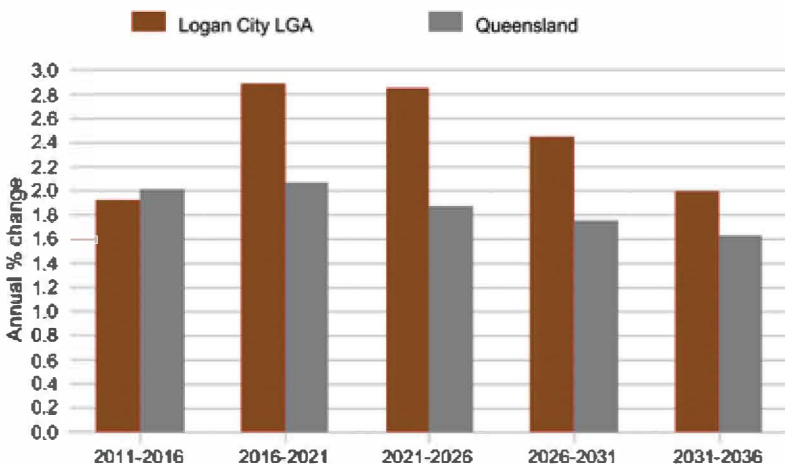
(Logan City LGA 2011 to 2036)

Number of new houses approved

1,974 approvals

(Logan City LGA in the 12 months ending 31 July 2015)

Projected population change (Logan City LGA and QLD)



Median total family income

\$71,812 per year

(Logan City LGA)



Source: www.qgso.qld.gov.au

LOCAL INFRASTRUCTURE

Logan Central Plaza

Known as the 'Heartbeat of Logan', Logan Central Plaza is a subregional shopping centre servicing the Logan community. With a Coles, Kmart and over 55 specialty stores in air conditioned comfort, residents can satisfy their shopping needs.

Logan Central Plaza has a generous amount of both open-air and shaded parking. Customer facilities include free wheelchair hire, parent's room, lost and found department, parent's and disabled parking.

Source: logancentralplaza.com.au



Logan Hospital

Logan Hospital is the major health centre for one of the fastest growing regions in the state. Logan Hospital has grown from a 48-bed community hospital in 1990 to a 344-bed hospital today, mirroring the rapid growth in population in the Logan region.

Logan Hospital provides acute medical, surgical, rehabilitation, maternity, cardiology, orthopaedics, renal and other specialty services for children and adults.

As part of their commitment to performing more elective surgery, in early 2014, Logan Hospital opened their eighth surgical theatre.

In late 2014, Logan Hospital opened its doors to a brand new multi-storey building as part of the multi-million dollar expansion project.

The first stages of this project included a new co-located adult's and children's emergency department, an expanded children's inpatient ward and a new 24-bed rehabilitation unit. A new cardiac catheter laboratory will also be built, allowing up to 800 local residents with heart conditions to be treated closer to home.

As a teaching hospital, Logan Hospital helps train future health care professionals and participates in research through strong partnerships with Queensland's leading tertiary institutions.

Source: www.metrosoth.health.qld.gov.au

LOCAL INFRASTRUCTURE

Griffith University - Logan Campus

Griffith University's Logan campus is located between Brisbane and the Gold Coast in Queensland's third largest city and one of Australia's most rapidly developing regions. It is a thirty minute drive from Brisbane's CBD and a forty minute drive from Southport on the Gold Coast.

Located at Meadowbrook, 25 kilometres south of the Brisbane CBD, Logan campus lies in the heart of Queensland's third largest city. Buses link to the nearby Loganlea Railway Station and the campus is a five minute drive to major shopping complexes.

Griffith is proud to be the University for the Logan community. Griffith offers a range of pathway programs providing access to university for students from all backgrounds.

Logan campus is a friendly community where lecturers really get to know their students, making students' goals far more achievable.

Hosting 2,500 undergraduate, postgraduate and research students, the campus is renowned as a national showcase of social inclusion in higher education through innovative partnerships, industry engagement and pathways to university study.

Griffith University's Logan campus offers all of the resources and expertise expected at one of Australia's top universities, including flexible learning options and accelerated study options in Business, Information and Communication Technology, Community health and Education.

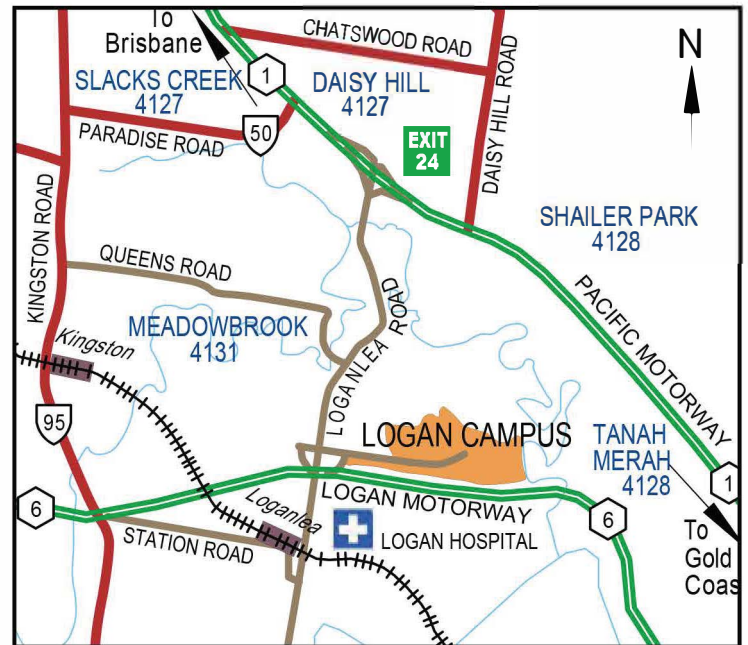
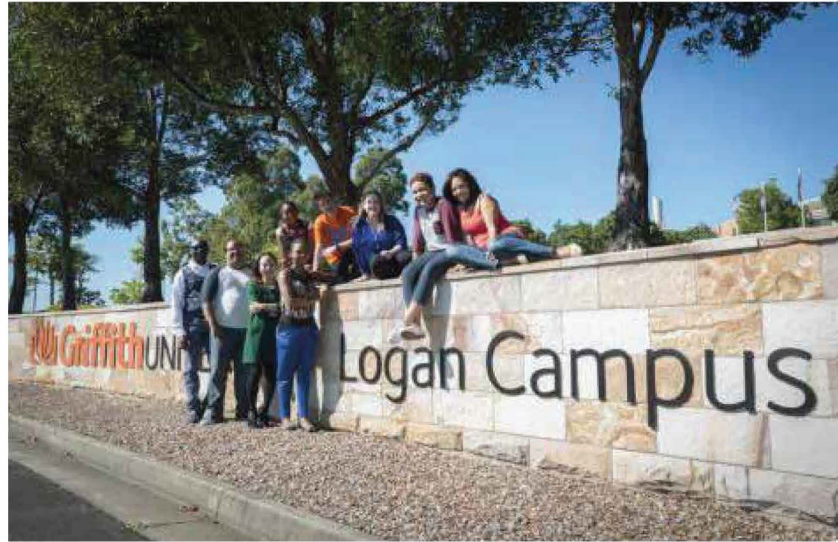
A gymnasium, hairdressing salon and a co-op bookshop can be found at the Logan campus.

The fully licensed Brooke Café serves up delicious, restaurant quality meals and snacks alongside coffee and cold drinks. Food is also available from the Logan Servery.

Split over two levels, the Logan campus library is the ideal study spot, offering Quiet Study Zones, Group Study Zones, computer terminals and copying and printing services. There is also a community lounge and acres of outdoor space available for studying.

The Logan campus hosts regular market days and golf days and students have the opportunity to get involved in a wide variety of Griffith sports teams.

Griffith University provides a comprehensive range of services for all students on all campuses. Services provided include accommodation, chaplaincy, child care, counselling, medical services and career and employment services.



Source: www.griffith.edu.au

A new South East Queensland hotspot? It's time to look at Logan City: Terry Ryder

TERRY RYDER | PROPERTY OBSERVER | 9TH FEBRUARY 2014



Domain's most recent price data had Brisbane as the number two capital city on median price growth in 2014 (behind, obviously, Sydney).

It found Brisbane's price growth has risen to 6.1%, providing another piece of evidence that Brisbane and South East Queensland is the nation's major rising market.

That in itself is not startling news, as many property analysts and commentators, including me, have been advocating Brisbane as a nation-leading growth centre for 2015.

On 1 December I wrote on Property Observer:

"There's a pretty good argument that the hottest property precinct in Australia right now is South East Queensland.

"Brisbane, the Gold Coast, the Sunshine Coast ... All three have hot markets. The research conducted by Hotspotting for the latest edition of the Price Predictor Index revealed 254 suburbs across South East Queensland with rising sales activity. To put that in perspective, the Sydney metropolitan area has 106 growth suburbs."

So that's a good starting point. But South East Queensland is a big chunk of territory. As I pointed out on 1 December: "Together they comprise a vast metropolitan area - ongoing urban growth means these three big centres have merged into one big conurbation which starts at the NSW border and extends 250 kilometres north to Noosa."

So where to place a more focused span of attention? There are myriad options but one that I particularly fancy is the unheralded (indeed often maligned) municipality of Logan City.

The local council sees it as a strategic "city between two cities" because Logan bridges the gap between Brisbane City and Gold Coast City.

It's a municipality of 60 mostly affordable suburbs and collectively they are a nice fit for my core formula of affordability + infrastructure + jobs = price growth.

It certainly qualifies on the affordability score. It has numerous suburbs with median house prices below \$300,000 and many others in the low-to-mid \$300,000s. That affordability attracts a lot of people and its population is tipped to grow from 300,000 to 500,000 over the next 20 years.

An area needs to offer more than cheap housing to qualify as a hotspot and some have unkindly renamed the area Bogan City.

But Logan offers plenty in the way of infrastructure, services and amenities. Logan City is a 35 minute drive from the Brisbane CBD and the Gold coast via the Pacific Motorway - and is also well serviced by buses and trains on the Gold Coast and Beenleigh lines.

The area is especially strong on retail facilities. The Logan Hyperdome is among the largest shopping centres in Australia while furniture and homewares giant Ikea has a large outlet in Springwood. The Logan Mega Centre has 28 retail stores which mostly offer household and furniture outlets, but also camping and sporting goods.

There are plenty of schools throughout the region and there are also an unusually high number of golf courses.

Jobs nodes include Teys Australia, the second largest meat processor and exporter in Australia, based in Beenleigh. Teys, which employs 800 people, was inducted into the Queensland Business Leaders Hall of Fame in December 2014. Another landmark is the Beenleigh Rum Distillery which began operations in 1884.

Logan is also not far to the Gold Coast theme park precinct, which includes Dreamworld and MovieWorld.

Investors like Logan City because, in addition to cheap prices and solid growth prospects, it has strong rental yields. Most suburbs have median house yields of 5.5% and above, with several between 6% and 6.5%. The median yield for units in Beenleigh, according to Domain, is 7.1%.

Most of the Logan City postcodes have vacancy rates below 2%, according to SQM Research.

In the past 12 months, a number of the suburbs of Logan City have recorded growth in median house prices between 8% and 12%.

Developers are increasingly targeting this area with large-scale projects, including a \$600 million retirement village, a \$550 million tourism village, a \$200 million residential estate and the new Alma Park Zoo, which is being relocated from the north of Brisbane.

A number of the area's icons - including the Logan Hyperdome shopping centre, the Beenleigh Rum Distillery and McNevin's Motel Loganholme - are undertaking expansions.

Major road linkages a high priority for Logan City Council

LOGAN OFFICE OF ECONOMIC DEVELOPMENT | 5TH MAY 2015



Logan City Council is focussing its attention on working with the Queensland Government to deliver critical road upgrades to alleviate traffic congestion and improve commuter times.

Widening the Pacific Motorway through Logan and the Wembley Road interchange have been road blocks in the city for years.

The upgrade of the M1 between Brisbane and the Gold Coast is essential to manage the ongoing growth pressures in the fastest growing region in Australia. This is not just a Logan problem, but a south east Queensland problem costing businesses and the economy. The positive impact of reducing travel times for freight and commuters will be far-reaching and significant.

with the Logan Motorway which is a major link connecting Logan Central and surrounding suburbs to South East Queensland. The corridor along Wembley Road has become a hub for transport and logistics companies with Toll and Ceva Logistics established in the area along with manufacturers Stoddart Manufacturing. An upgrade to this interchange is key to unlocking 3,000 new industry jobs as well as reducing significant congestion impacts on key business and industry.

Council understands the importance of these two infrastructure projects which are both included in its 'City of Logan: Infrastructure for our future' publication. The publication lists Council's priorities to support economic and social opportunities in the City of Logan's three key areas of:

- Connected Economies
- Productive Centres; and
- Inclusive Communities.

Council representatives have met with the Queensland Government to discuss these urgent projects and will continue to work to ensure these priorities are high on the agenda.

Another critical pinch point is the Wembley Road interchange

Sewerage and water investment for Logan City Council

UTILITY ENGINEERING, CONSTRUCTION & MAINTENANCE | 18TH MAY 2015



Logan City Council (QLD) has announced significant investment in water and sewerage infrastructure construction and renewal programs over the 2015/2016 financial year, in order to cater for forecast rapid population growth.

Roads and Water Infrastructure Committee Chairman, Councillor Don Petersen, said, "Logan's population is projected to top 400,000 people by 2031, so it is imperative that Council's investment in new and renewal infrastructure programs keeps pace with that growth.

"Residents should expect to receive a safe and reliable water supply and sewerage service and Council's ongoing investment program ensures they do."

Cr Petersen said the capital program would invest \$58.9million in water and sewerage infrastructure in 2015/2016. This includes \$29million in new infrastructure and \$29.9million in asset replacements and renewals.

"The value of Logan's water and sewerage infrastructure is approximately \$2billion so it is critical that we continue to invest in the renewal of ageing assets," he said.

"Since 2008, Council has invested about \$85million in the augmentation of the Alfred Street Pump Station, the Loganholme Wastewater Treatment Plant inlet works and the connecting rising main – the largest sewerage upgrade in Logan in more than a decade.

"The next major project upstream of the Alfred Street pump station is the Slacks Creek Trunk Sewer Main, which will see \$27million invested over three years on the renewal and strengthening of the capacity of the trunk sewerage system.

"Council will also invest \$6million on water supply main renewals and \$6.5million on sewerage network renewals this year."

Logan City Council unveils new \$1.3 million security room

KRISTIAN SILVA | THE AGE | 10TH MARCH 2015



Logan City Council's security room. Photo: Glenn Hunt

Big Brother's eye will be sharpest over Logan, with the council unveiling a \$1.3 million camera room with state-of-the-art technology.

Security officers will have access to about 310 cameras across the city, stationed in malls, train stations, bus stops, parks and other thoroughfares.

All this will be managed through the latest version of Teletec, a security system used in cities including Paris and Stockholm.

Logan Mayor at the opening of the Logan City Council's security room on. Photo: Glenn



Hunt

Logan Mayor Pam Parker described the city's previous security monitoring setup as "archaic", and believes the new technology will help cut crime.

The council is trialling facial recognition technology and it is understood they are investigating whether footage from city cameras could be transmitted to police iPads.

Already, some footage from Logan city cameras can be beamed directly to officers at the Beenleigh, Browns Plains and Logan Central police stations.



L-R: Old MP Cameron Dick, Chief Superintendent Marty Mickelson, Logan Mayor Pam Parker, Federal MP Bert van Manen and Logan Deputy Mayor Russell Lutton at the security room. Photo: Glenn Hunt

"This is a wonderful tool for police when they're conducting prosecutions in the court because the camera doesn't lie," Cr Parker said.

In the 12 months to March 2015, the council said about 2700 "incidents" were captured on cameras it monitors. This included crimes, drunk people in the streets, people suffering mental health issues, car accidents and burst watermains.

Cr Parker dismissed concerns that residents' civil liberties were at risk, saying the cameras were never fixed on homes.

"If you're not doing anything wrong you have nothing to fear from these cameras. They are there for public safety and I don't have any problems being on our streets and keeping our communities safe," she said.

The state government provided \$250,000 of funding for the security room upgrade. Woodridge MP Cameron Dick said improving residents' safety and reducing crimes were two of his top priorities.

Fairfax Media approached other Southeast Queensland councils about their CCTV systems. Here's what they said.

Brisbane

First installed - 1994

Number of cameras - 2600+

Operational cost - \$1.1 million in 2014-15

Ipswich

First installed - 1994

Number of cameras - 250 (approx)

Operational cost - \$1.14 million (approx)

Gold Coast

First installed - 1998

Number of cameras - 200

Operational cost - \$1.55 million in 2014-15

Moreton Bay

First installed - Not provided

Number of cameras - 744 (this is all security cameras, including those inside council buildings)

Operational cost - Not provided

Sunshine Coast

First installed - 2007

Number of cameras - 220

Operational cost - \$400,000 per year (approx)

INVESTMENT VIRTUES



Why Invest in Logan?

- The City of Logan is in the centre of the rapidly growing South-East Queensland region and is uniquely placed at the centre of a major transport corridor. The city's location allows many businesses to access domestic and global markets and achieve time and cost efficiencies.
- City of Logan has direct access to three major arterial networks, two international airports, freight rail and the Brisbane to Sydney passenger rail line.
- Emerging industries reflect the city's connectivity to both the region and world with transport and logistics, food manufacturing and processing, advanced manufacturing, health and aged care, education and training all growth sectors.
- New industries joining a strong economic base driven by manufacturing, property development and construction, retail and wholesale trade which are the top three contributors to a Gross Regional Product of \$9.617 billion.
- Over the last year it has seen median house prices increase in value by 9.28%.
- Affordable house prices.
- Gross rental yield of 5.89%.
- Supportive business environment.
- Access to vital transport infrastructure.
- Access to Asian and Pacific Island markets.
- Gateway to major Queensland mining, resources and infrastructure projects.
- Access to a regional catchment of over 3 million people for labour supply.
- Diverse housing, education and lifestyle options.

Source: www.visitlogan.com.au, www.yourinvestmentpropertymag.com.au

CITY OF LOGAN

